



**Railing Dynamics, Inc.**  
For home, for life.™  
135 Steelmanville Road  
Egg Harbor Township, NJ 08234  
TEL: (877) 420-7245  
FAX: (866) 277-5160  
E-MAIL: [cs@rdirail.com](mailto:cs@rdirail.com)  
URL: [www.rdirail.com](http://www.rdirail.com)

The Titan Pro Rail System exceeds U.S. building code requirements and has been independently tested by a third-party, ICC-ES certified testing and inspection agency. Visit [www.rdirail.com](http://www.rdirail.com) to view testing data online or print a report.

Always consult your local Building Code Department for applicable regulations and product acceptance.

For additional information on Titan Pro Rail or other RDI products visit [www.rdirail.com](http://www.rdirail.com) or contact our Customer Service Department at (877) 420-7245.

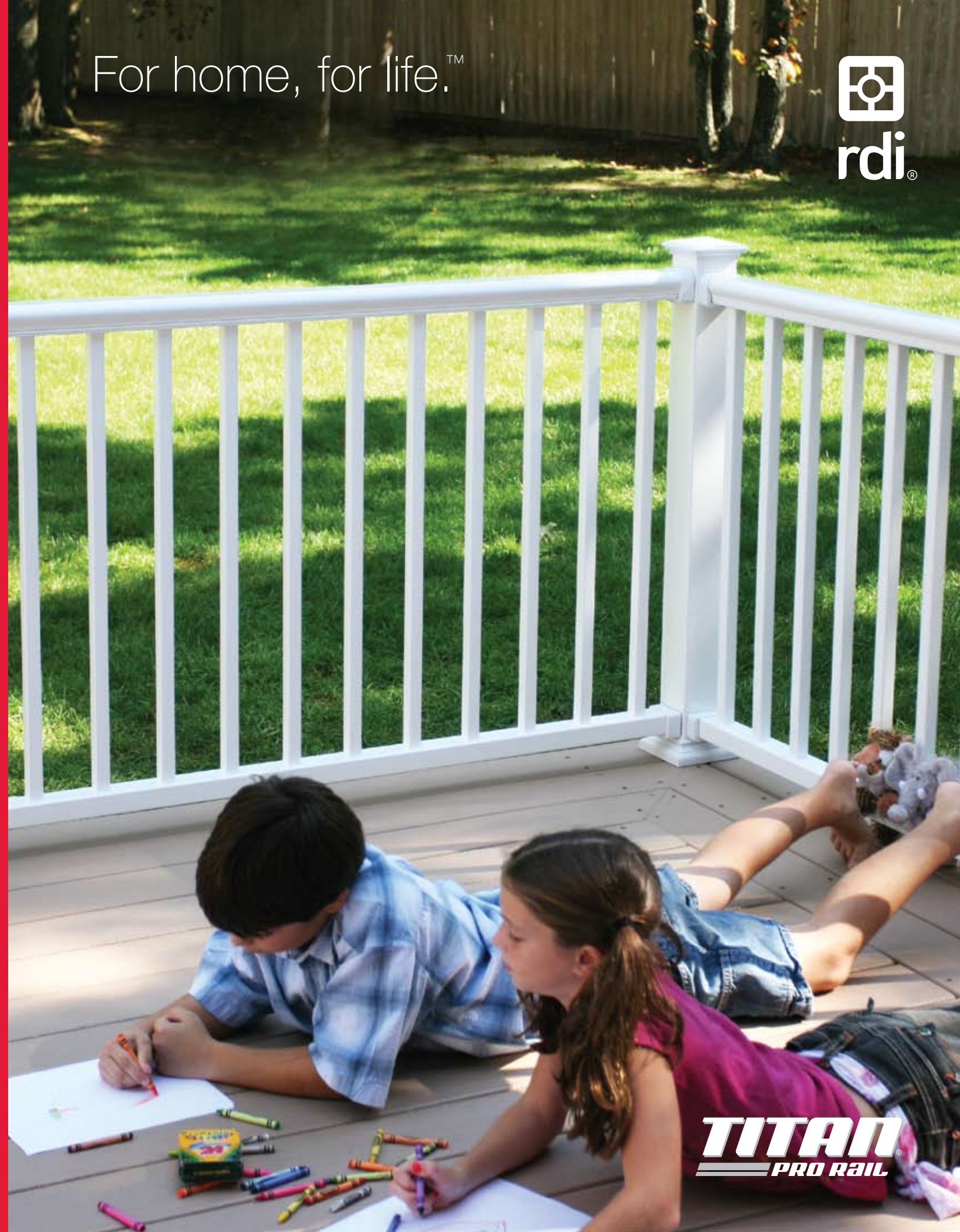
+

Please note that the color representations in this brochure are not necessarily precise representations of actual material colors due to the variance in the printing process. Please consult an actual sample before making any critical color matching decisions.

**TITAN**  
PRO RAIL

TMPRPG

For home, for life.™



**TITAN**  
PRO RAIL





# This won't take long.

Titan Pro Rail™ was created with the installer in mind. A Titan rail section assembles in minutes and is ideal for residential and commercial applications. Metal to metal connections add to the sound engineering that enables easy and safe installations. Titan is manufactured using the highest quality materials to meet your performance and building requirements.

Titan's pre-assembled, galvanized steel posts eliminate the time consuming task of installing brackets on the job. We have already done your work for you. Corner, end, and mid posts are supplied with heavy duty cast aluminum brackets attached to vinyl sleeved structural posts. A blank post with separate bracket kits is offered for stair and custom applications. Flexible vinyl bracket covers are supplied with the posts and bracket kits, and can be snapped on when the installation is complete.

Our ongoing commitment to making the safest, highest quality products available today makes it easy for you to choose RDI. Visit [www.rdirail.com](http://www.rdirail.com) for more information.

ALL TITAN PRO RAIL PRODUCTS  
ARE AVAILABLE IN WHITE ONLY.



**TITAN**  
PRO RAIL

## TABLE OF CONTENTS

- INTRODUCTION - Page 1
- GALLERY - Pages 2-5
- FEATURE SPOTLIGHT - Pages 6-7
- EASY INSTALL - Pages 8-11
- ORDERING GUIDE - Pages 12-20





# FEATURE SPOTLIGHT PRE-ASSEMBLED POSTS

Extremely strong, heavy duty 3" x 3" square galvanized interior post extends above the top brackets, providing a metal to metal connection between the brackets and posts.

Posts have a 1/4" x 5" x 5" square flange plate welded to the upright and are hot dip galvanized.

Flange posts can be mounted to almost any surface.

Pre-mounted cast aluminum brackets eliminate time consuming labor in the field and the liability of improper installation.

The U-shaped brackets allow you to pre-assemble the railing kit then simply drop it into the brackets.

Posts are supplied with vinyl sleeves.



# FEATURE SPOTLIGHT KITS

- Titan is an aluminum railing system with steel structural posts clad in extremely low maintenance vinyl.
- The strength and durability of metal without the maintenance.
- The fastest and most simple installation in the industry because we have pre-installed the mounting brackets.
- Titan's economical price and labor-saving installation makes it a great alternative to wood railing and its associated expensive maintenance.
- Titan railing and baluster profiles are very narrow and won't block the view from your porch or deck.
- Titan exceeds ICC code requirements for railing applications\*.
- Titan meets the International Residential Code for stair hand railing; no secondary handrail is needed for residential applications.
- Titan carries a limited lifetime warranty.

Titan's stylish top rail profile has classic lines and a flat top making it a great choice for porches and decks.

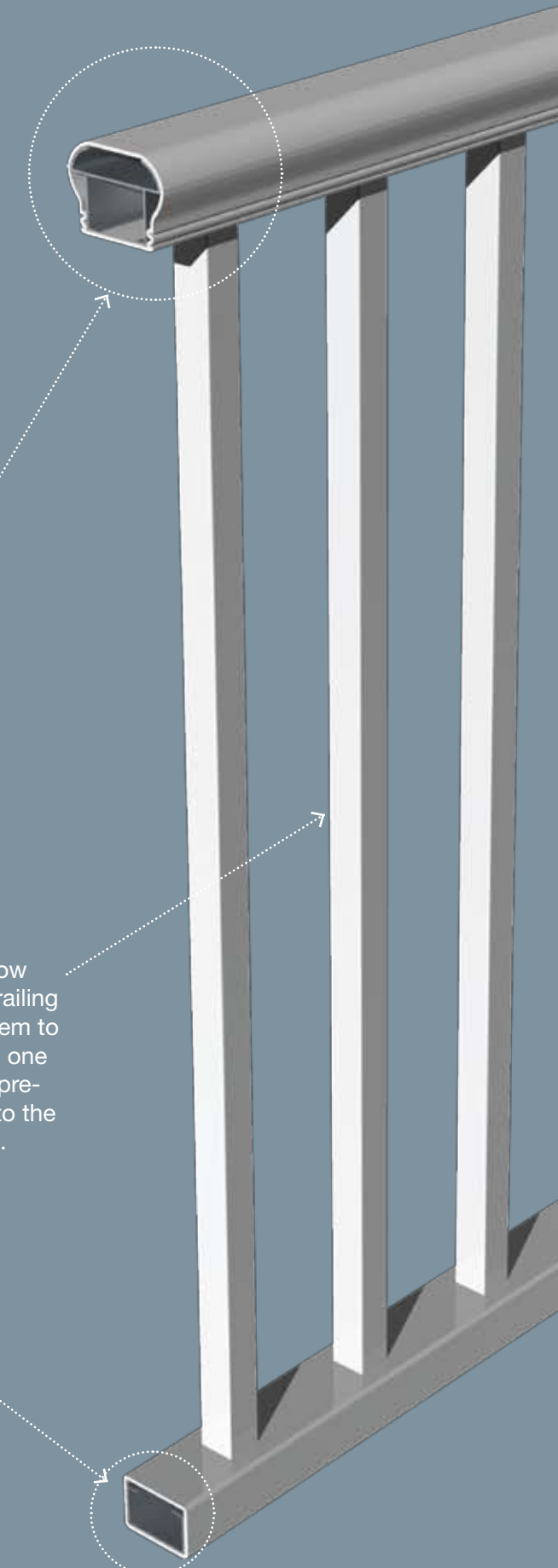
The vinyl exterior and aluminum rail stiffeners can be easily cut on-site with a carbide tipped miter saw, unlike systems with steel inserts.

Crimped balusters allow you to pre-assemble railing sections and move them to the installation area in one unit; Simply drop the pre-assembled section into the pre-installed brackets.

\* The Titan Pro Rail System exceeds building code requirements and has been independently tested by a third-party, ICC-ES certified testing and inspection agency. Visit [www.rdirail.com](http://www.rdirail.com) to view testing data online or print a report.

Always consult your local Building Code Department for applicable regulations and product acceptance.

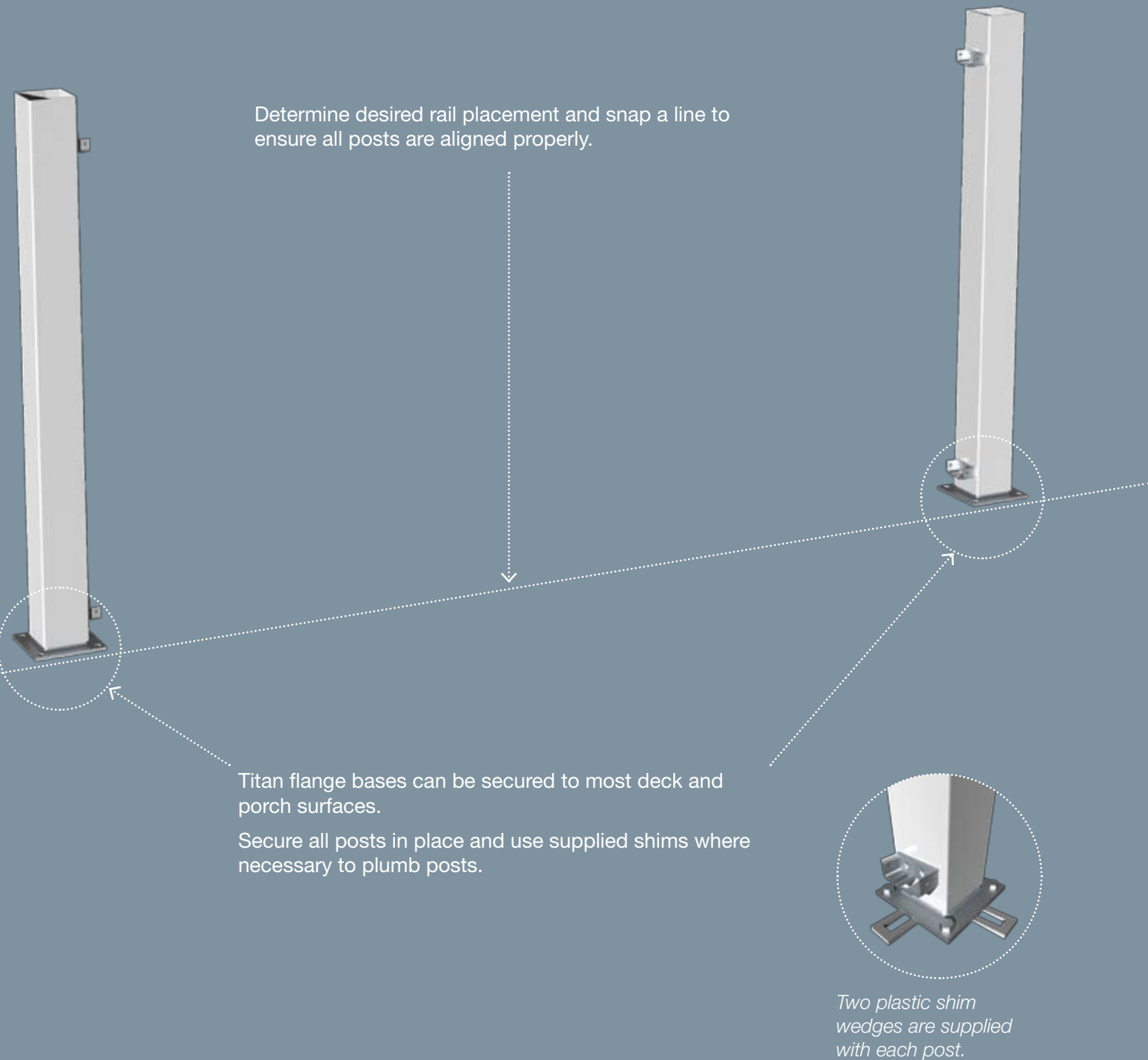
For additional information on Titan Pro Rail or other RDI products visit [www.rdirail.com](http://www.rdirail.com) or contact our Customer Service Department at (877) 420-7245.



## EASY INSTALL - STEP 1

# SET AND PLUMB POSTS

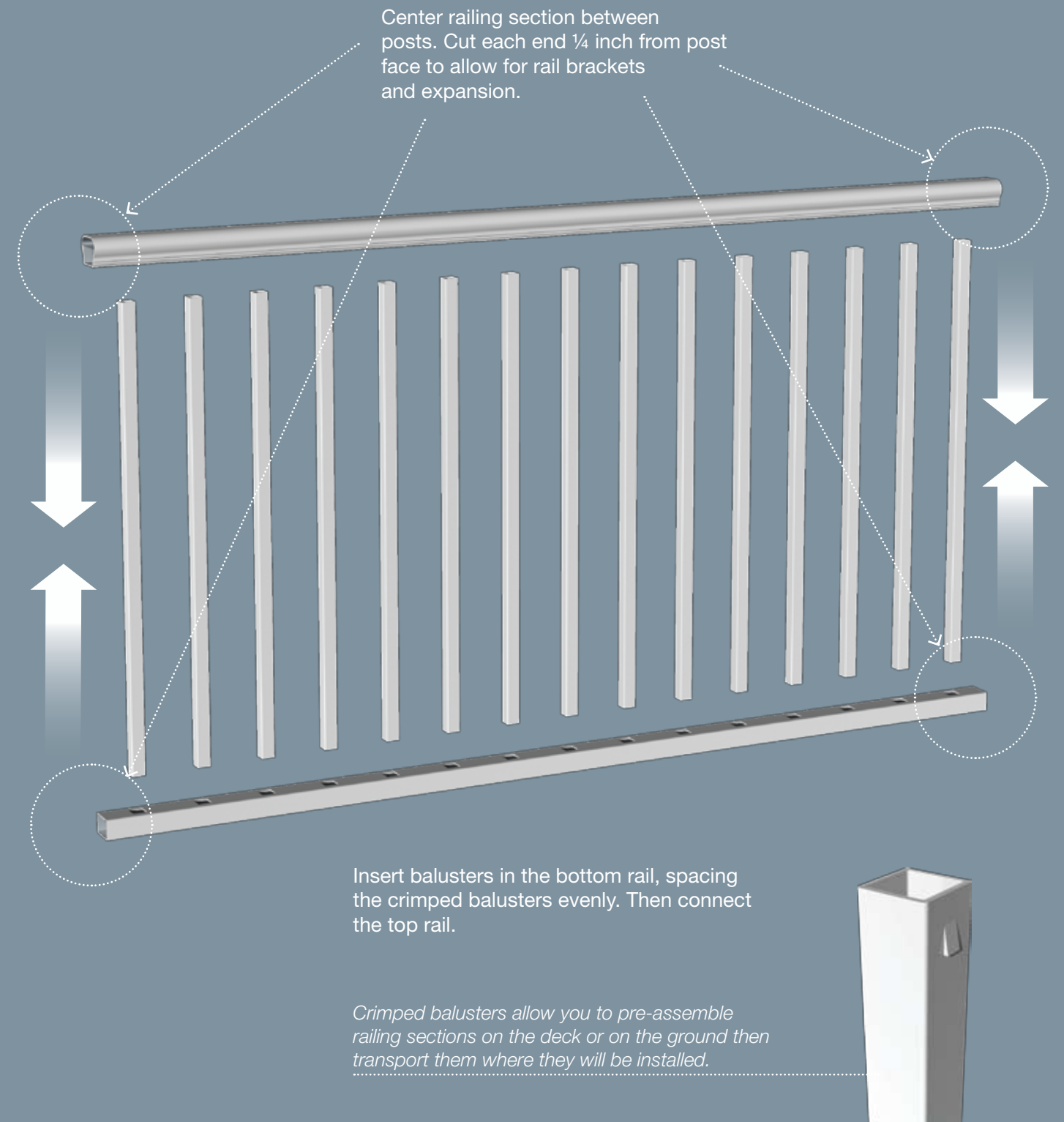
RDI innovation once again sets a new standard for vinyl railing systems. The first pre-mounted railing brackets make Titan the fastest and simplest installation in the industry. We have done your work for you in our factory, saving you time and money on the job.



## EASY INSTALL - STEP 2

# ASSEMBLE RAILING SECTION

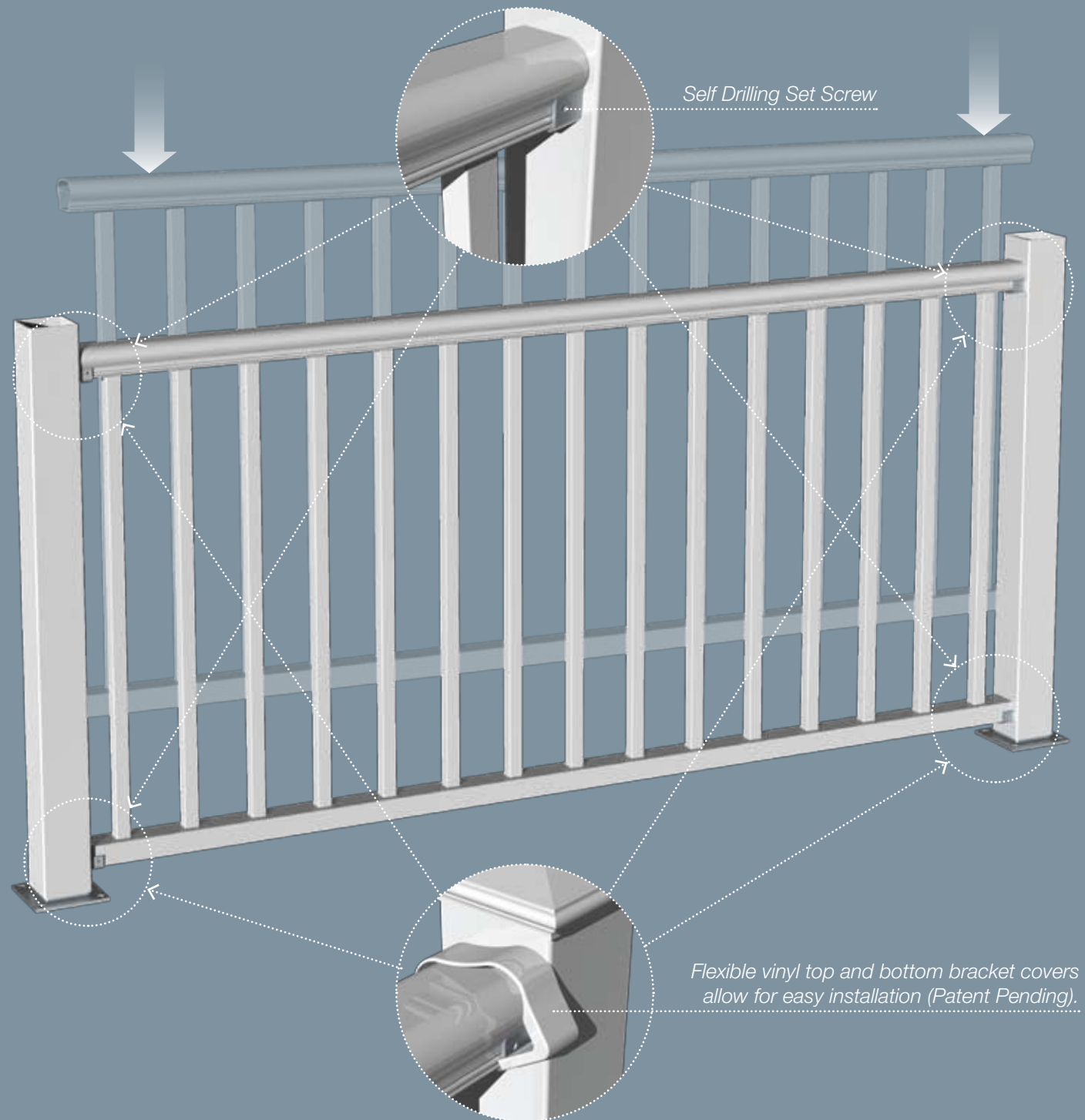
Titan railing kits are supplied with interior aluminum stiffeners which cut easily on-site using a carbide tipped saw blade.



# EASY INSTALL - STEP 3

## SECURE RAILING

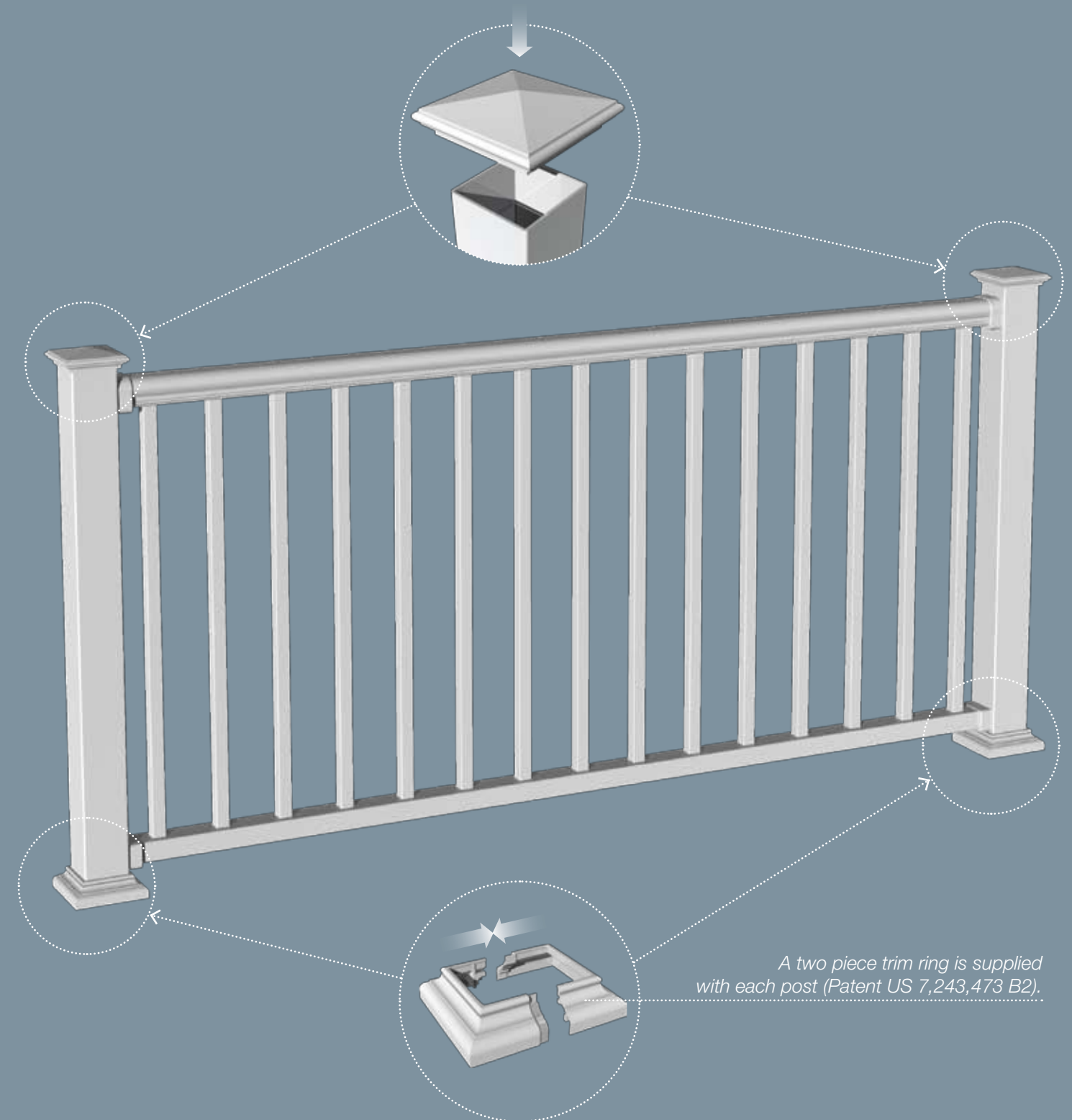
Hang assembled section between posts on factory installed brackets and secure top and bottom rails using 2 supplied self drilling set screws in each bracket. Flexible vinyl bracket covers are simply snapped around the brackets after the installation is complete. Titan's patent pending design firmly secures the cover to the bracket concealing all mounting hardware.



# EASY INSTALL - STEP 4

## ATTACH ACCESSORIES

Two piece trim rings snap together to conceal the flange base and hardware, and requires no adhesives (Patent US 7,243,473 B2). The post caps are attached to the posts with PVC adhesive.



# HOW TO USE THE TITAN PRO RAIL ORDERING **GUIDE**

## Start >

### PLAN

Begin by removing the cover from the guide. The worksheet has been provided to assist in the planning of your railing installation. Sketch your installation on the provided grid and use the parts list to tally the SKUs.

1.

#### PICK A POST.

Depending upon your installation choose from a corner, line, end, or blank post.

2.

#### PICK A KIT.

Choose from either 6ft or 8ft level and stair kits.

3.

#### PICK YOUR ACCESSORIES.

Choose from our decorative cap or flat cap to finish your post. Bracket adapter kits are also available for custom installations.



## > Finish

### SUPPLY THE FORM TO YOUR DISTRIBUTOR

Take or fax the completed form to your distributor. The distributor can assist in the placing of your order.

# STEP 1 - PICK A POST END POST

The end post is supplied pre-assembled for 36" or 42" high railing applications and includes the vinyl sleeve, cast aluminum brackets, galvanized structural post, flexible bracket covers, and two piece trim ring. The end post is used where level applications end or in some cases where level applications end and stair applications begin. You may need to use a 42" or 48" blank post in this application depending on the rise and run of your stair and the placement of your top stair post. Post caps and optional stair brackets sold separately.

#### 36" RAIL HEIGHT

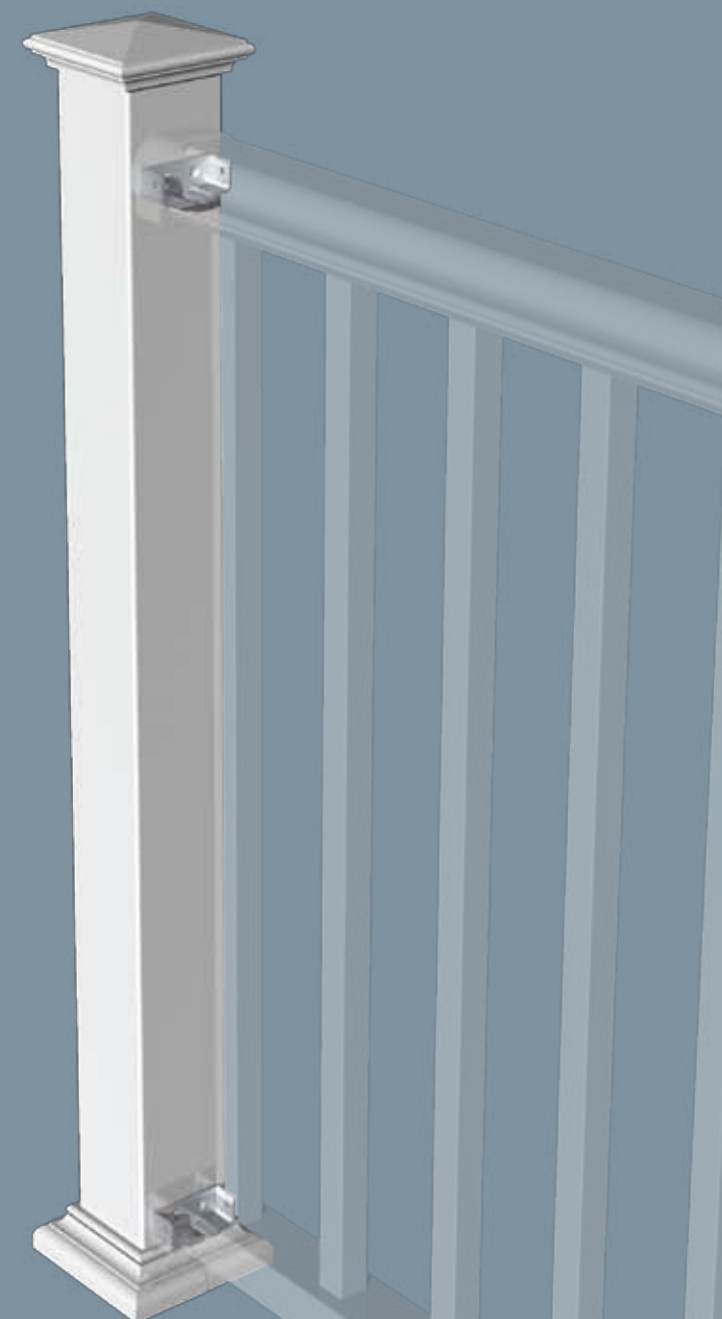
TPPE36 - End Post

#### 42" RAIL HEIGHT

TPPE42 - End Post



Bracket  
Configuration



# STEP 1 - PICK A POST

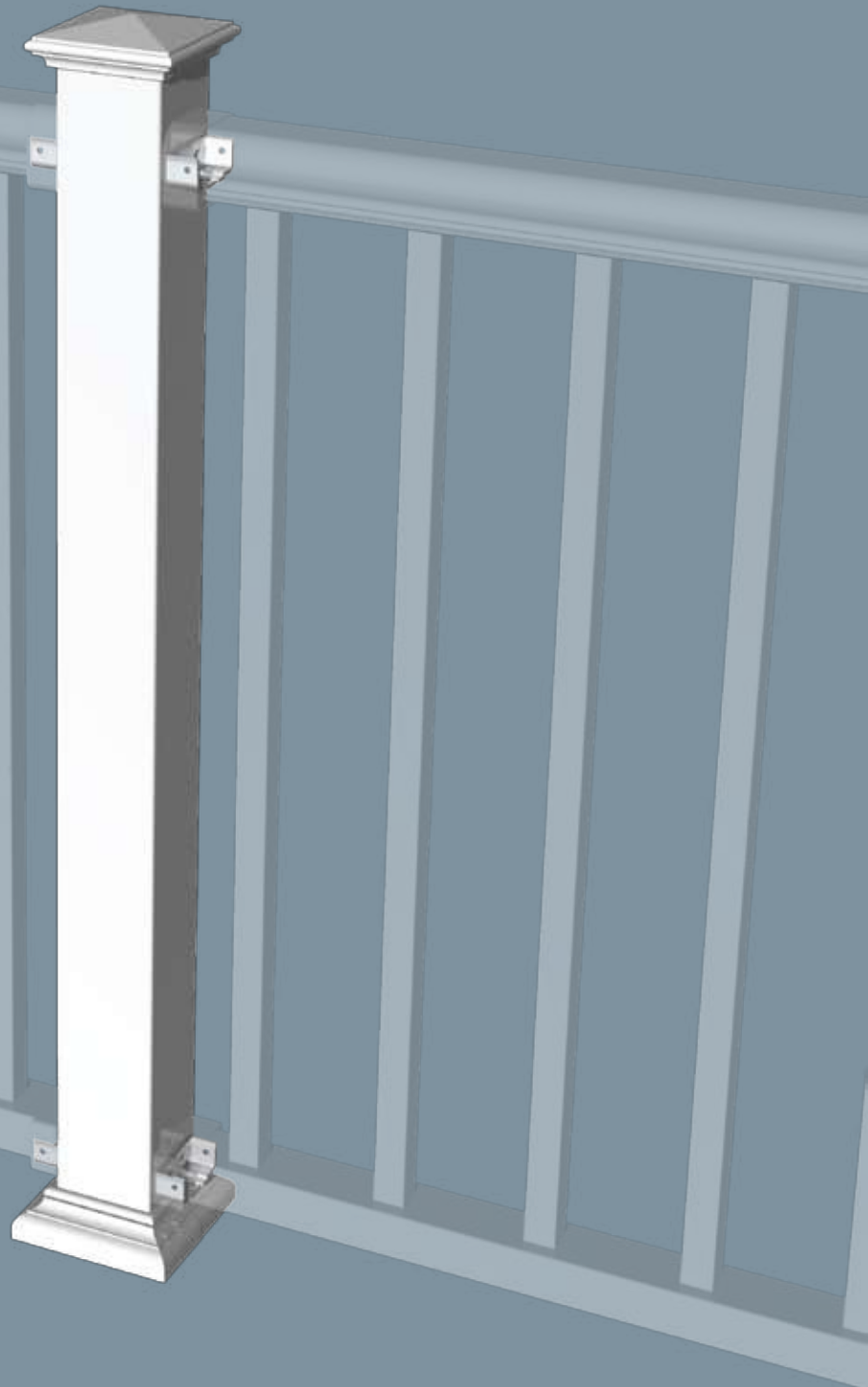
## MID POST

The line post is supplied pre-assembled for 36" or 42" high railing applications and includes the vinyl sleeve, cast aluminum brackets, galvanized structural post, flexible bracket covers, and two-piece trim ring. Post caps sold separately.

36" RAIL HEIGHT	42" RAIL HEIGHT
TPPL36 - Mid Post	TPPL42 - Mid Post



*Bracket Configuration*



# STEP 1 - PICK A POST

## CORNER POST

The corner post is supplied pre-assembled for 36" or 42" high railing applications and includes the vinyl sleeve, cast aluminum brackets, galvanized structural post, flexible bracket covers, and two-piece trim ring. Post caps sold separately.

36" RAIL HEIGHT	42" RAIL HEIGHT
TPPC36 - Corner Post	TPPC42 - Corner Post



*Bracket Configuration*



# STEP 1 - PICK A POST

## BLANK POST

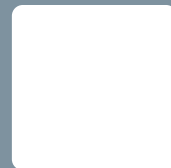
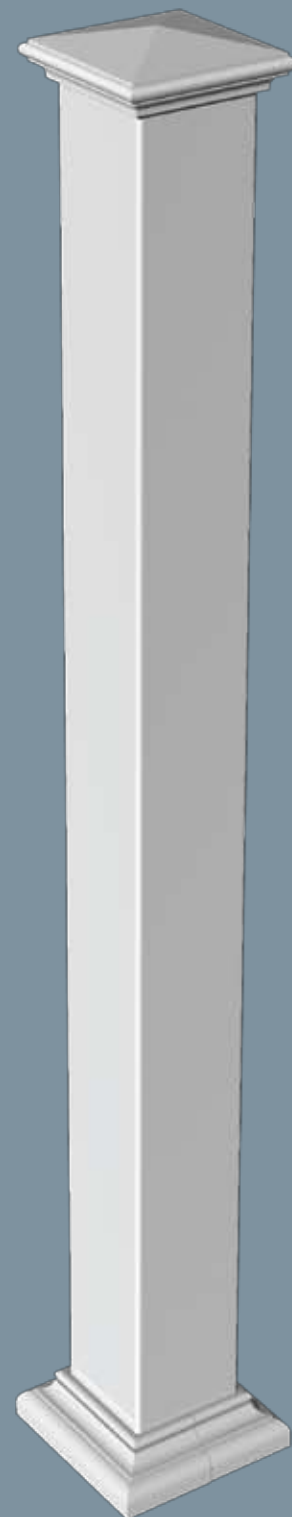
The blank post is supplied for 36" or 42" high railing applications and includes the vinyl sleeve, galvanized structural post, and two-piece trim ring. A 48" structural post with a 52" sleeve is also available for special applications.

The blank post can be utilized in both stair and level applications if the pre-assembled post is not ideal. Brackets and post cap sold separately.

36" RAIL HEIGHT	42" RAIL HEIGHT
TPPB36 - Blank Post	TPPB42 - Blank Post

48" BLANK POST
TPPB48 - 48" Post, 52" Sleeve

BRACKET KITS
TPABKL - LEVEL BRACKET KIT, 2 PAIR
TPABKS - STAIR BRACKET KIT, 2 PAIR



No Brackets

# STEP 1 - PICK A POST

## BLANK POST OPTIONS

### LEVEL BRACKET KIT - TPABKL

Level brackets can be used to install Titan railing kits to existing posts, walls, or other mounting surfaces in level railing applications. Top and bottom level brackets are the same and are supplied in sets of 4 and include flexible vinyl bracket covers and mounting screws.

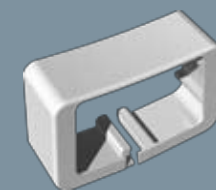
Level Bracket (4)



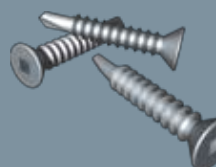
Top Level Bracket Cover (2)



Bottom Level Bracket Cover (2)



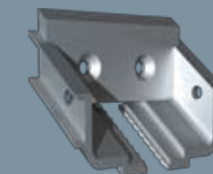
Screws (16)



### STAIR BRACKET KIT - TPABKS

Stair mounting brackets are used for all stair applications and are always purchased separately from the post. Stair brackets are supplied with flexible vinyl bracket covers and mounting screws. Two top stair brackets and two bottom stair brackets are included in each kit.

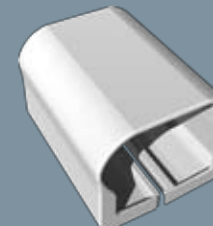
Top Stair Bracket (2)



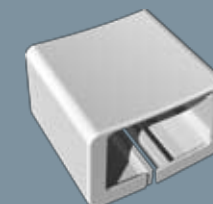
Bottom Stair Bracket (2)



Top Stair Bracket Cover (2)



Bottom Stair Bracket Cover (2)



\* Note-Screws supplied with Titan brackets are only to be used when mounting to Titan posts. When mounting to other surfaces use fasteners designed for the type of mounting surface which will meet the prescribed building code design loads.

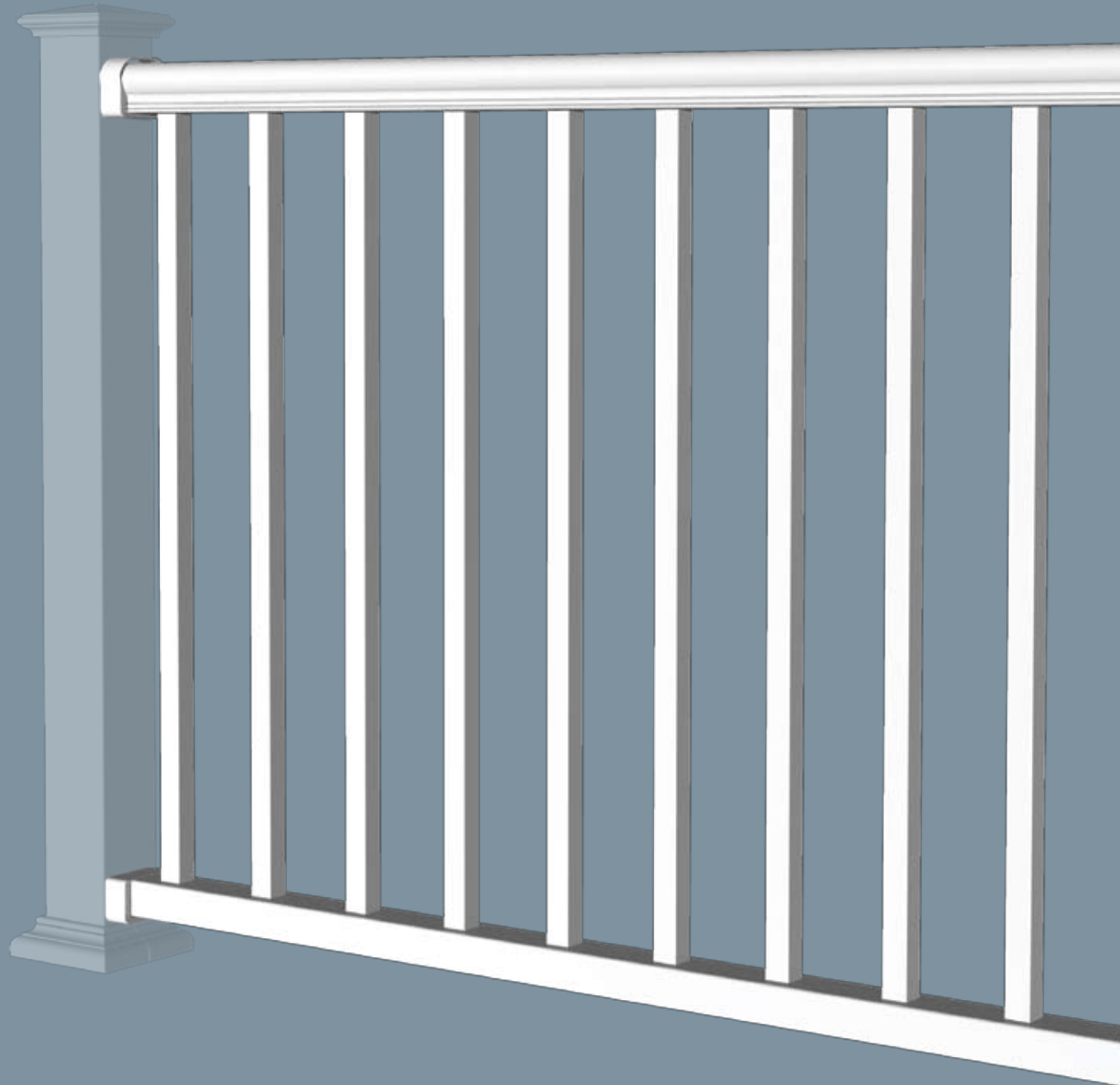
# STEP 2 - PICK A KIT

## LEVEL RAIL KITS

### LEVEL RAIL KITS

Titan Pro Rail level kits contain everything you need to create a safe and code-compliant rail section in one convenient box: top and bottom vinyl extrusions with interior aluminum stiffeners, and balusters. Level kits come in both 36" and 42" heights and 6 and 8ft. lengths. Posts, brackets, caps, and trim rings sold separately.

36" RAIL HEIGHT	42" RAIL HEIGHT
TPL6-36 - 6' KIT	TPL6-42 - 6' KIT
TPL8-36 - 8' KIT	TPL8-42 - 8' KIT



# STEP 2 - PICK A KIT

## STAIR RAIL KITS

### STAIR RAIL KITS

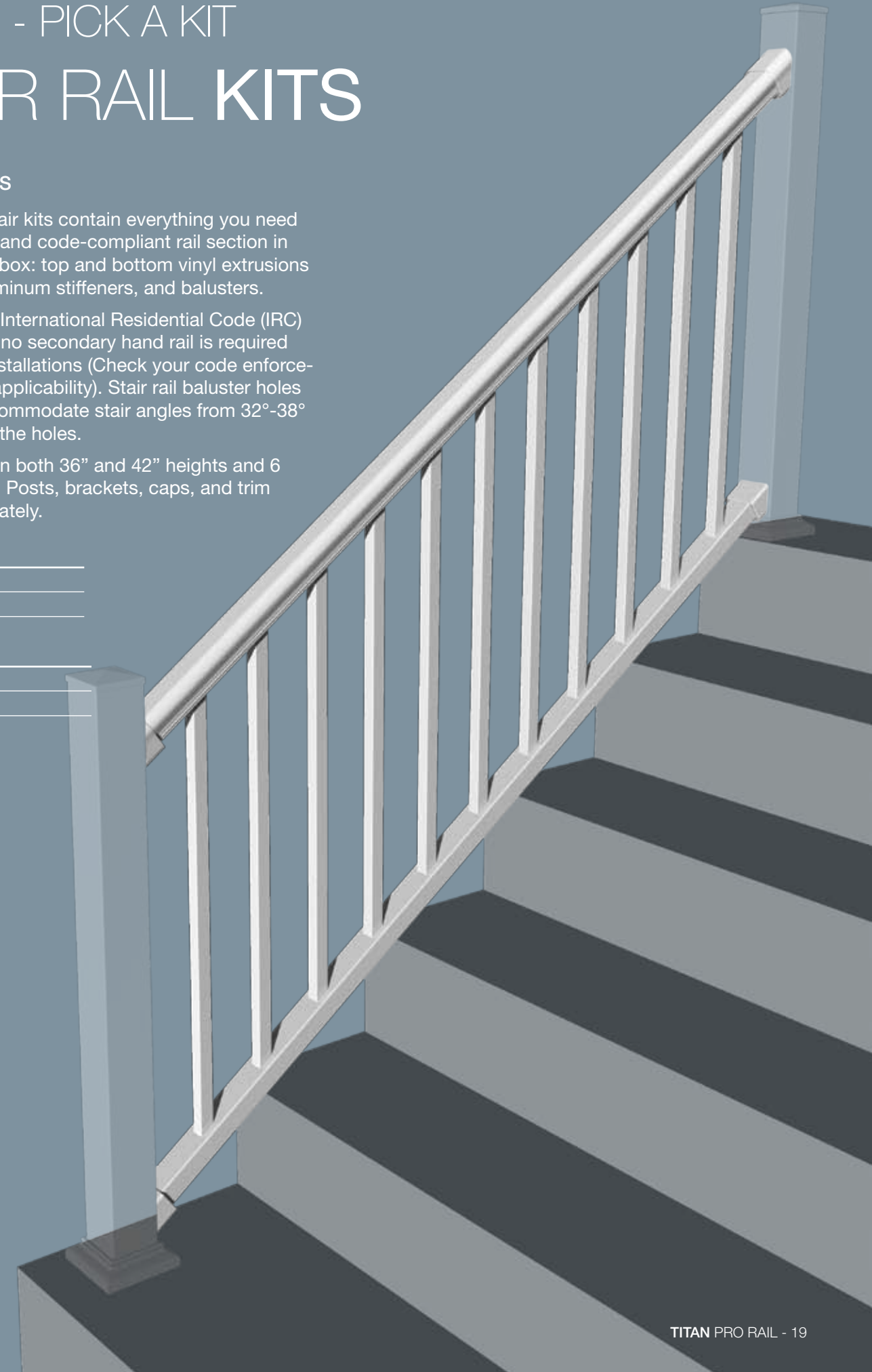
Titan Pro Rail stair kits contain everything you need to create a safe and code-compliant rail section in one convenient box: top and bottom vinyl extrusions with interior aluminum stiffeners, and balusters.

Titan meets the International Residential Code (IRC) for hand rail, so no secondary hand rail is required on residential installations (Check your code enforcement office for applicability). Stair rail baluster holes are sized to accommodate stair angles from 32°-38° without altering the holes.

Stair kits come in both 36" and 42" heights and 6 and 8ft. lengths. Posts, brackets, caps, and trim rings sold separately.

36" RAIL HEIGHT
TPS6-36 - 6' KIT
TPS8-36 - 8' KIT

42" RAIL HEIGHT
TPS6-42 - 6' KIT
TPS8-42 - 8' KIT



## STEP 3 - PICK YOUR ACCESSORIES

# POST ADAPTERS & CAPS

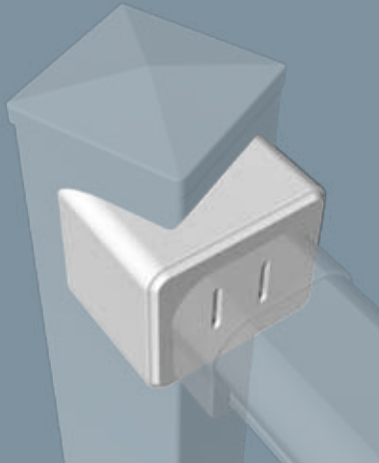
### 45° BRACKET ADAPTER - TPA45AK

This adapter attaches to the corner of any post to allow rail attachment at 45° (Set of 2).



### 22.5° BRACKET ADAPTER - TPA22AK

This adapter attaches to the corner of any post to allow rail attachment at 22.5° (Set of 2).



### ROUND COLUMN BRACKET ADAPTER - TPARCA

This adapter attaches to round columns and simplifies kit attachment (Set of 2).



*\* Note-Screws supplied with Titan bracket adapters are only to be used when mounting to Titan posts. When mounting to other surfaces use fasteners designed for the type of mounting surface which will meet the prescribed building code design loads.*

### TPADC - DECORATIVE CAP

Post caps can be glued in place using PVC cement.



### TPAFC - FLAT CAP

